

NANSHA IT PARK
南沙資訊科技園



where Talent and Technology
converge

Creativity and Ideas
thrive

and Dreams
realized

A Technology Hub – where talent and technology converge



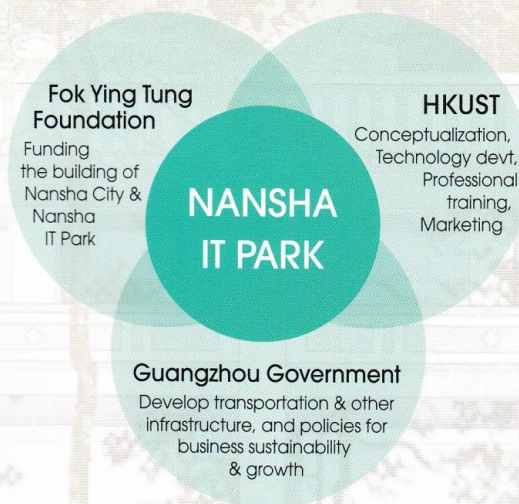
Nansha IT Park

Nansha IT Park (NSITP) is a collaboration between the Fok Ying Tung Foundation, the Hong Kong University of Science and Technology (HKUST) and the Guangzhou Municipal Government. In 1999, the Park received approval from the Ministry of Science and Technology to be a part of the Guangzhou High Tech Industrial Development Zone. On December 9th the same year, the Ministry designated NSITP as a state level software base under the Torch Plan, recognizing it as an integral part of Guangzhou's Software Parks.

The Park stretches over an area of 2.5 sq km. Phase I, built on 20 hectares of land, with a construction area of 60,000 sq m., has 4 areas of focus, namely, Industry and Technology Development, Conference and Training, Guest House, and Residential and Recreation.

Nansha IT Park's mission is to :

- promote Nansha to be the hub of high-tech research, development and industrialization;
- provide advanced technology support and productivity upgrade for industry; and
- boost the Pearl River Delta as a technology metropolis, one that is driven by the knowledge economy with continuous development.



Unique characteristic of Nansha IT Park

– the Park is a collaboration between:

- Guangdong and Hong Kong
- University and Corporation
- Government and Community



Nansha IT Park is now home to quite a few technology companies and more than 300 technology professionals, engaged in software development, photonics, network technology, microelectronics packaging, embedded systems, logistics and supply chain management, biotechnology, etc.

Nansha's advantageous geographical location, comfortable living environment and abundant opportunities from her accelerated growth are attracting various technology talents to work and start businesses here.

The Guangzhou University Town, near Nansha, will also substantively cultivate elites for the area.



Training Center

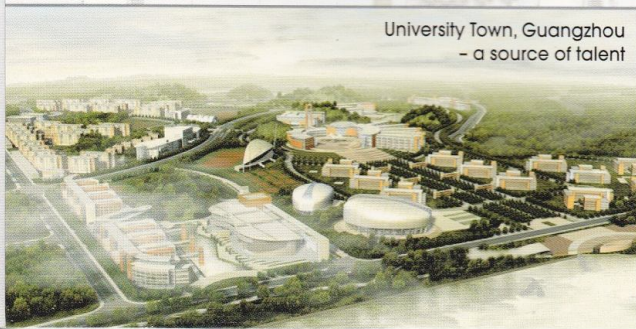


Guest House

Talent and technology are converging here; giving rise to an energetic and vibrant technology community.

"This is where people and technology will converge, creativity and ideas thrive, and dreams realized. Nansha IT Park is at the core of this spirit."

*Prof. Roland Chin,
Vice President, Research & Development
Hong Kong University of Science and Technology*



University Town, Guangzhou
- a source of talent

A Nurturing Environment – where creativity and ideas thrive



Labs, Incubators and Technology Workspace

Nansha IT Park strives to make the work environment comfortable, nurturing and conducive for research, development and innovation; one where lush greenery, lakes, traditional architecture, culture and modern construction soothingly blend together, to bring out the best in creativity and ideas.

Nansha IT Park has over 15,000 square meter of premium office space, equipped with high-speed leased line internet, gigabit Ethernet fiber-optic backbone network, stand-by generators, UPS (unlimited power supply), and building automation and security systems.



R&D and technology projects in our laboratories.



Calligraphy by Mr. Li Tie Ying, Vice Chairman of National People's Congress, presented to Nansha IT Park.

Activities suitable at the Nansha IT Park include:

- Technology research, development and industrialization
- Product design and prototyping
- Software application development
- System design & integration
- Technical support center
- Data and service center
- Business Incubation
- Training and E-education

A Knowledge Center – where training is a vital engine for growth



Conference and Training Center

Our commitment towards knowledge extends far beyond the provision of conference and training facilities. More important to us is the provision and facilitation of a wide range of skills-upgrading and training courses, with backing from the Hong Kong University of Science and Technology, to serve the high-tech industries of the Pearl River Delta.

In 2006, Nansha IT Park will host the Nansha Science and Technology Forum, a series of high-level discussions on "Emerging Technologies".



500-seat Auditorium



Seminars held at our EMBA Room



Exhibitions held in Main Foyer



Grand Lobby



Night View of Conference Center



VIP Room

Comprehensive Supporting Facilities – providing services to businesses



Guest House

To support the Park's R&D and business activities, and to provide turn-key training and conference services, NSITP's Guest House has 83 well-appointed bedrooms and suites for visitors and conference participants. It has all the functions of a boutique hotel, with the added coziness and intimacy of a Park.

Facilities available include:

- 67 deluxe bedrooms
- 13 business suites
- 3 deluxe suites
- Chinese and western restaurants
- Coffee house
- Lobby lounge
- Business center
- Board room and meeting rooms
- Fully-equipped fitness center
- Outdoor and indoor swimming pools
- Billiard room



Relax with a drink and enjoy the view from the Lobby Lounge



A range of deluxe rooms, and 1 and 2-bedroom suites



Chinese and Western cuisines to meet your dining, entertainment and banquet needs

A Campus Setting – offering an unrivalled quality of life

“We strive to build an innovative system here, where the players – businesses, government, university and technology institutes – interact to support each other.”

*Prof. Otto C.C. Lin
Vice Board Chairman, Nansha IT Park*



Staff Dormitories and Apartments

Amid lush greenery and tranquility, our well-appointed residential quarters and social amenities seamlessly integrate with work spaces in a secure campus setting, providing staff and their families an enviable living environment.

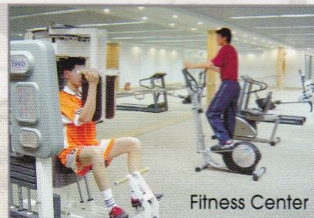
- Park-like landscaped environment
- Refreshing Work-Live-Play ambience
- Natural and healthy environment, conducive for raising the family
- Sports, recreational & social facilities
- Proximity to schools, medical services, banks, shops, entertainment, etc.



Fok Ying Tung High School



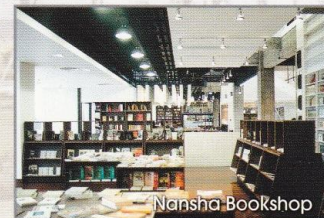
Teamwork & Community Spirit



Fitness Center



Healthy Lifestyle



Nansha Bookshop

Advantageous Location – at the center of the Pearl River Delta

Situated on the west bank of the Pearl River, Nansha is uniquely located at the geometric center of the Pearl River Delta (PRD), placing it within 1 hour's travel of most PRD cities. A comprehensive transportation network provides easy and convenient access to and from Nansha. For example, the Southern Highway connects Nansha to Guangzhou, the Jingzhu Highway to Zhongshan and Zhuhai in the south, and to Beijing in the north, the Humen Expressway to Dongguan and Shenzhen, and by high-speed ferries to Hong Kong.



Guangzhou, Shenzhen, Zhuhai and most PRD cities are within an hour's drive of Nansha.



New Ferry Terminal – facilitates comfortable and efficient travel between Hong Kong and Nansha. Frequent 75-minute shuttles connect the two cities.



Various types of ground transportation to destinations in Nansha and other PRD cities are readily available.



Construction of the new subway from Guangzhou Downtown to Nansha has begun and is expected to be completed in 2006, reducing travel time to 30 minutes.

Bringing Nansha Closer to Guangzhou Downtown

The 'No. 4' subway, when completed in end 2006, will link Nansha with Guangzhou University Town and Guangzhou Downtown, reducing travel time to a half hour. Also under construction is the Eastern Highway, providing another access between Nansha and Guangzhou.

For more information, please contact us at:

Website: <http://www.nansha.com>

Nansha:

Nansha IT Park,
Guangzhou Nansha Economic Development Zone,
Guangzhou, China.
Tel: (86) 20-8468-5016 or 20-3468-6888
Fax: (86) 20-8468-6143

Email: nsitp@nsitp.com

Hong Kong:

c/o Hong Kong University of Science and Technology,
Applied Technology Center,
Clear Water Bay, Kowloon, Hong Kong.
Tel: (852) 2358-8957
Fax: (852) 2358-1334